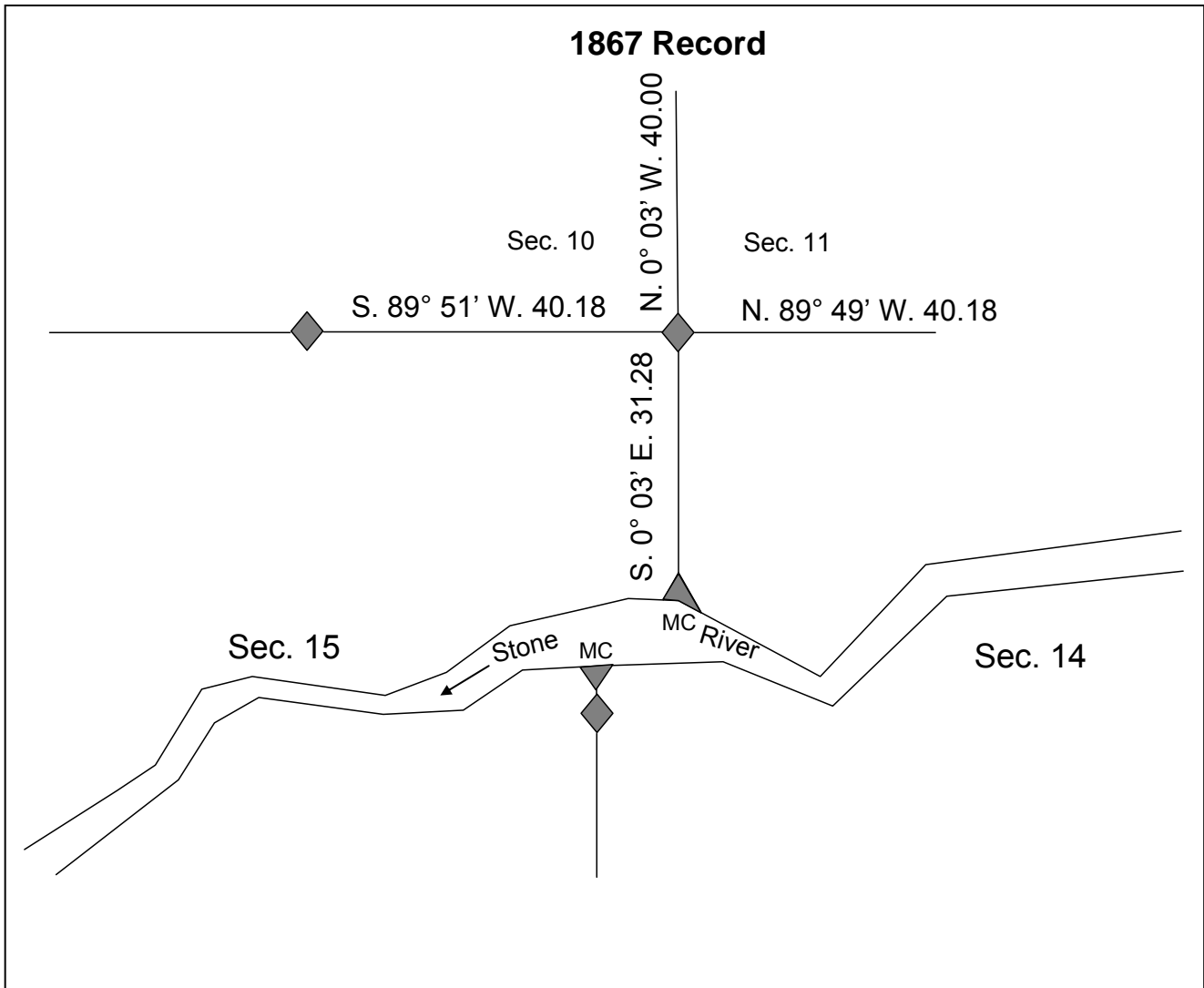
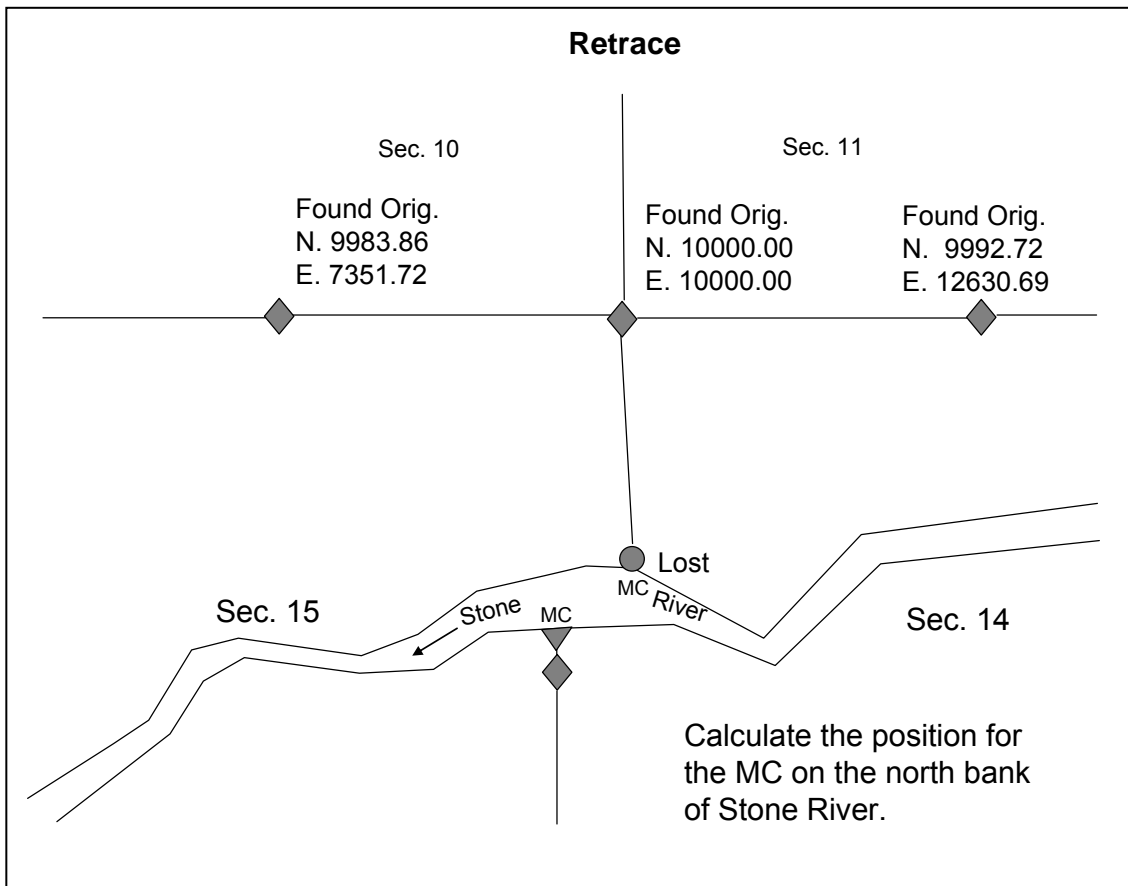
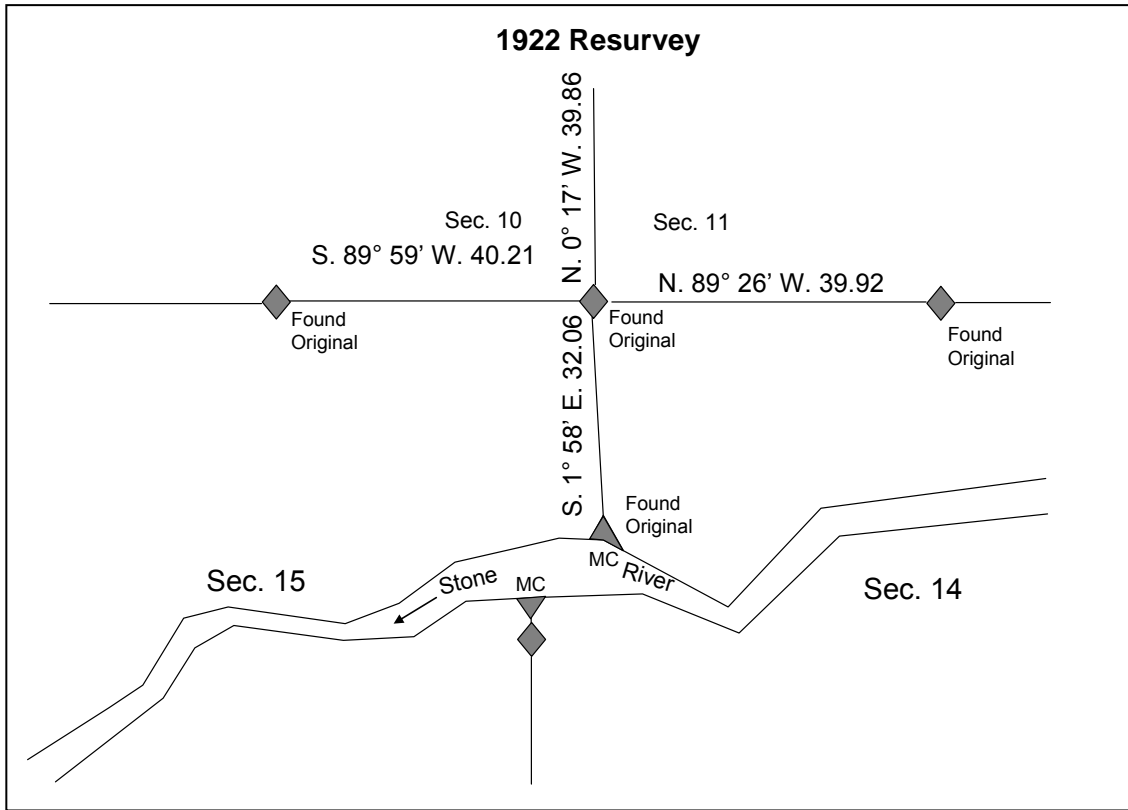


**Original Control (one point)**





**Sec. 7-56 Original Control**

Where a line has been terminated with measurement in one direction only, a lost corner will be restored by record bearing and distance, counting from the nearest regular corner, the latter having been duly identified or restored.

An index correction for average error in original measurement should be used, if appropriate, as discussed in section 5-29.

**Calculate N-S**

*(An index correction is not appropriate because we have not retraced enough of the retracement survey)*

$$\cos 1^\circ 58' \times 2115.96 \text{ ft. (32.06 chs.)} = \text{S. } 2114.71$$

$$\text{N. } 10000.00 - 2114.71 = \text{N. } 7885.29$$

**Calculate E-W**

*(An index correction is not appropriate because we have not retraced enough of the retracement survey)*

$$\sin 1^\circ 58' \times 2115.96 \text{ ft. (32.06 chs.)} = \text{E. } 72.62 \text{ ft.}$$

$$\text{E. } 10000.00 + 72.62 = \text{E. } 10072.62$$

**Proportionate Position of the Section Corner**

**N.7885.29**  
**E.10072.62**

