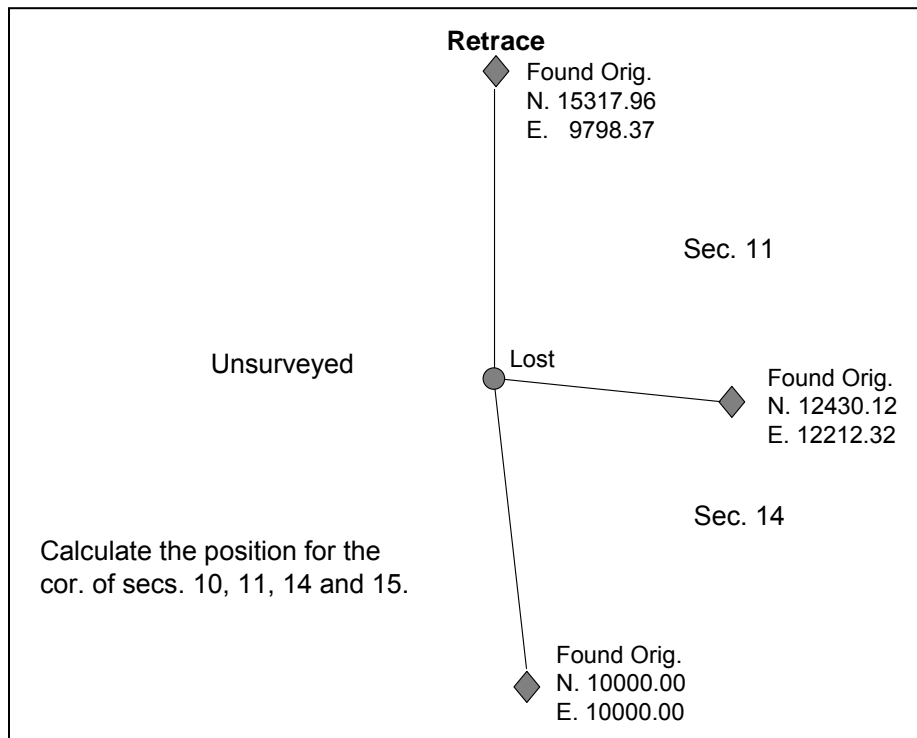
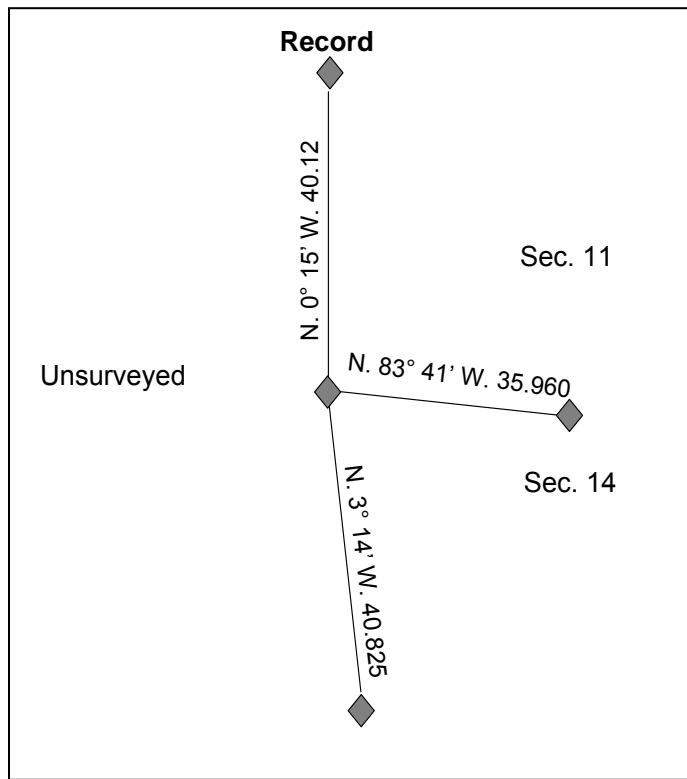


Three Point



N-S Proportion:

Record latitude between controlling corners: N. 5338.06 ft.

Retrace latitude between controlling corners: N. 5317.96 ft.

Retrace \div Record = K

$$5317.96 \div 5338.06 = 0.996235$$

K x Record latitude of each segment of the line = Proportionate latitude of the line segment

$$0.996235 \times 2690.16 \text{ ft. (40.760 chs.)} = 2680.03$$

$$\text{“} \times 2647.90 \text{ ft. (40.120 chs.)} = 2637.93$$

$$\text{N.}10000.00 + 2680.03 = \text{N.}12680.03$$

$$\text{N.}12680.03 + 2637.93 = \text{N.}15317.96$$

E-W Proportion

Sin $83^\circ 41'$ x 2373.36 ft. (35.960 chs.) = Record departure (minus because the line is West)

$$0.110023 \times 2373.36 = -2358.95 \text{ ft.}$$

$$12212.32 - 2358.95 = \text{E. } 9853.37$$

Proportionate Position of the Section Corner

N. 12680.03
E. 9853.37

